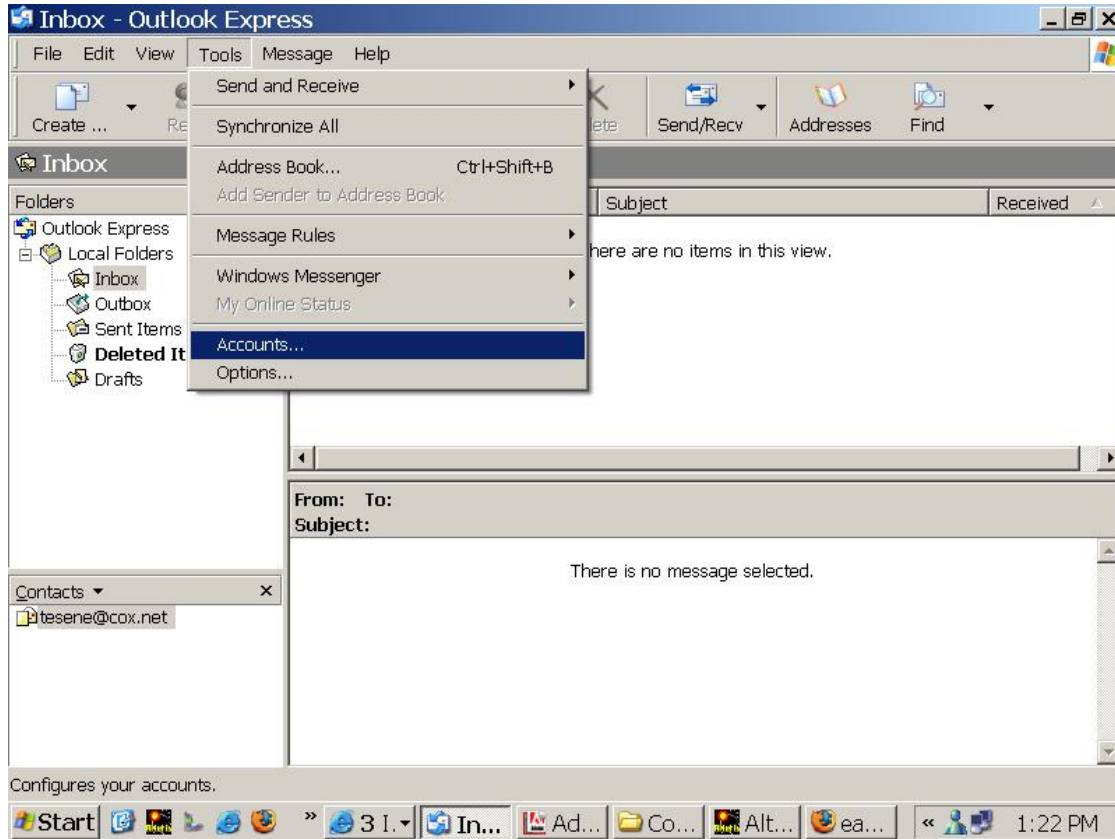
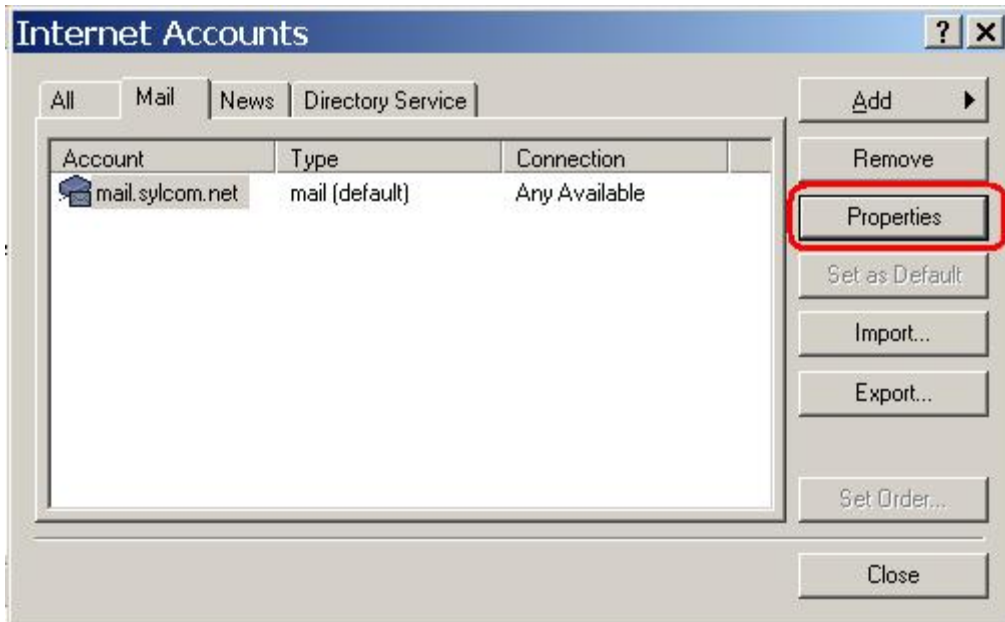


To reconfigure outlook express for our recent security-related updates please follow these instructions:

Open Outlook Express and go to Tools -> Accounts



Click on the "Mail" tab, select your Sylcom account, and click the "Properties" button.



In the Properties window, select the “Servers” tab, and make the following changes:

Change your account name to be your full email address @sylcom.net  
Select the “My server requires authentication” checkbox.

mail.sylcom.net Properties

General Servers Connection Security Advanced

Server Information

My incoming mail server is a POP3 server.

Incoming mail (POP3): mail.sylcom.net

Outgoing mail (SMTP): mail.sylcom.net

Incoming Mail Server

Account name: example@sylcom.net

Password: ●●●●

Remember password

Log on using Secure Password Authentication

Outgoing Mail Server

My server requires authentication

Settings...

OK Cancel Apply